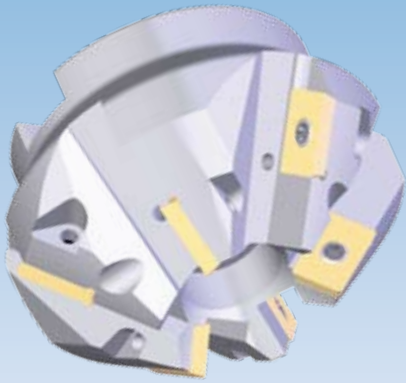
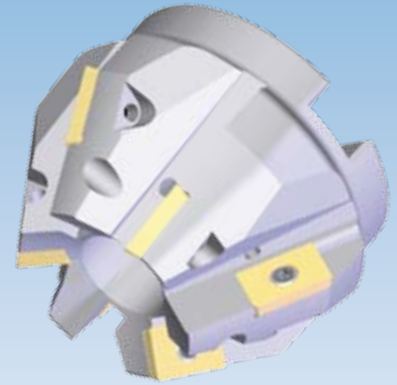
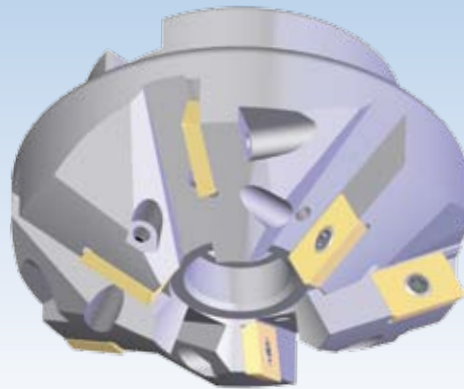


Chamfering Mill

30° 45° 60°

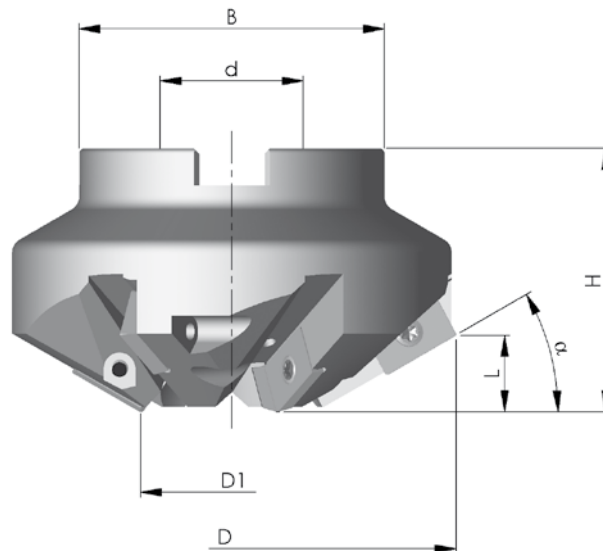


Milling tools ...



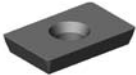

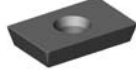
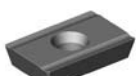

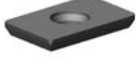
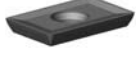
...made by Jongen!

Technical data:



Order-No.	D	D ₁	H	α	L	d	B	Z
ASF-35-30-14	85,2	35	50	30°	14,4	27	58	3x2
ASF-35-45-20	76,0	35	50	45°	20,4	27	58	3x2
ASF-39-60-25	68,0	39	50	60°	25,1	27	58	3x2





Tungsten Carbide Inserts

 15,6x10x3,18 r=0,8	FP 41 (B6) FP 41 T**	TA50 Ti20 K15M P25M HS20 P25M**	Precision sintered insert with chamfered and rounded cutting edge, reinforced cutting edge, supporting and cutting surfaces ground
 15,6x10x3,18 r=0,8	FP 41 A (B6)	TA50 Ti20 SR30 K15M P25M	Precision sintered insert with chip-groove supporting and cutting surfaces ground
 15,6x10x3,18 r=0,8	FP 42 (B6) FP 42 T**	HT50 TA50 Ti20 KT25 SR30 P25M P25M**	Precision ground insert, chamfered and rounded cutting edge, reinforced cutting edge, supporting and cutting surfaces ground
 15,6x10x3,18 r=0,8	FP 42 A (B6)	TA50 Ti20 SR30 K15M P25M	Precision ground insert with chip breaker, mating and cutting surfaces ground
 15,6x10x3,18 r=0,4	FP 42 TiN-HSSE (B6)	TiN-HSSE	Precision ground insert, supporting and cutting surfaces ground
 15,7x10x3,97 r=0,8	FP 46 (B6)	HT50 TA50 Ti20 P25M HS20	<i>N.B.: nominal diameter = +0,2 mm also: side angle 1° off the perpendicular!</i> Precision sintered insert, chamfered and rounded cutting edge, reinforced cutting edge, supporting and cutting surfaces ground
 15,8x10,1x3,97 r=0,8	FP 47 (B6)	HT50 TA50 Ti20 SR30 P25M	<i>N.B.: nominal diameter = +0,2 mm also: side angle 1° off the perpendicular!</i> Precision sintered insert with chip-groove, chamfered and rounded cutting edge, reinforced cutting edge, supporting and cutting surfaces ground

Packed in boxes of: 10 pice

For additional protection chamfer of the uncoated inserts a "T" is to be added to the order no.

Spare Parts

	SS 4,0-1	Fixing screw		T 15	Screwdriver
	MS-12x30-912	Central screw		100g	Heavy duty grease

Jongen Werkzeugtechnik GmbH & Co. KG

Siemensring 11 · D-47877 Willich

Tel: +49 (0)2154 / 9285-0 · Fax: +49 (0)2154 / 911976

FreeFax: 00 800 / 56 64 36 33

www.jongen.de · email: info@jongen.de